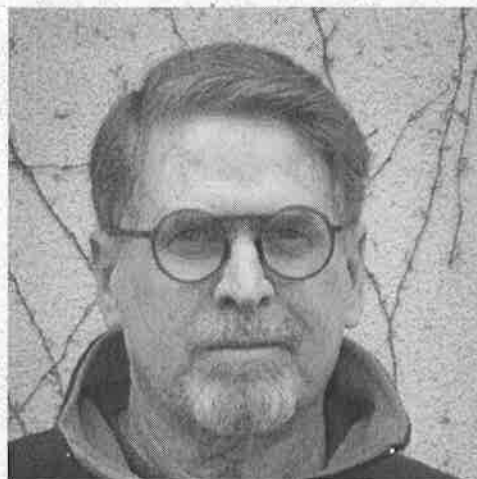


Conversation Analysis & its Relevance to Language Education Webinar Series

May 7th / 14th / 21st / 28th, 2022 (Saturdays)

9:00 – 12:00



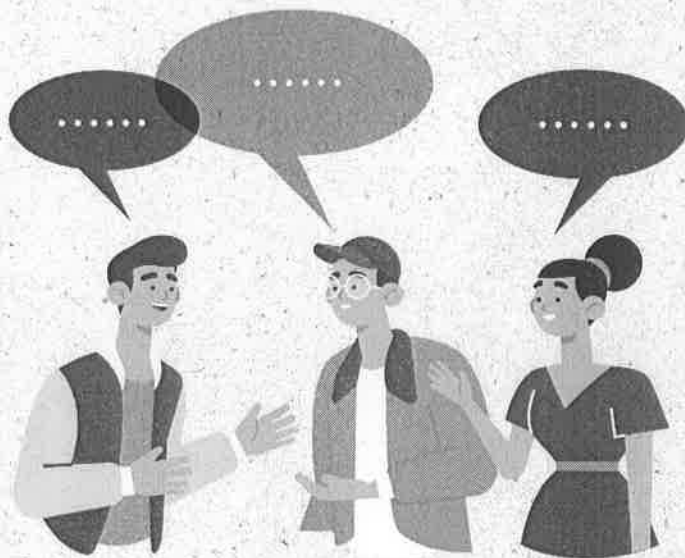
Dr. Donald Carroll

Professor Emeritus

Shikoku Gakuin University, Japan

Dr. Donald Carroll has been a professor of English and TESOL at Shikoku Gakuin University in Japan since 1996. Prior to coming to Japan, he taught EFL/EAP/ESP as well as TESOL methodology courses at universities in Mexico, the Sultanate of Oman, Kuwait, and Saudi Arabia.

His Ph.D. (University of York, 2006) was a conversation analytic study of novice-to-novice L2 interaction. He taught an Introduction to Conversation Analysis course for Temple University Japan's MATESOL program for several years. He has, for many years, explored ways to integrate the findings of conversation analysis into EFL and has authored several articles on this topic.



- May 7** A Conversation Analytic Perspective on Interaction and Language
- May 14** Conversation Analytic Observations: Sequence Organization and Preference
- May 21** Conversation Analytic Observations: Questions and Questioning
- May 28** Conversation Analysis and the Understanding of Classroom Interaction

Register online:

This webinar is open to researchers, observers of bilingual classroom teaching, and in-service teachers



Contact Person Michelle Jose / michellejose@mail.ntue.edu.tw

Organizer Center for Research on Bilingual Education, National Taipei University of Education